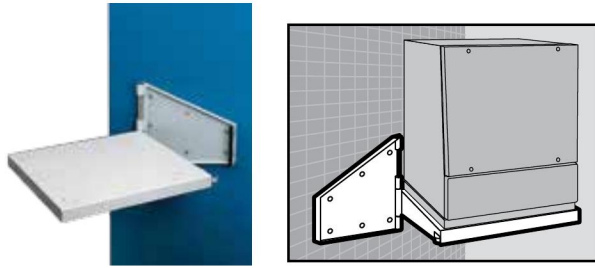


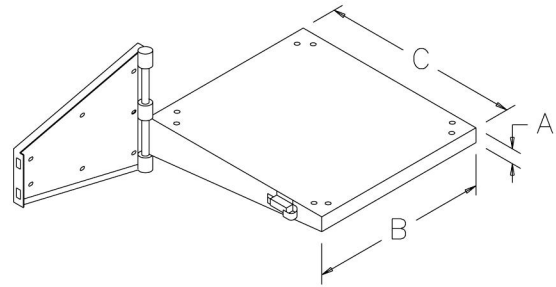
WALL-MOUNT KIT



Hinged platform for a PROLINE sloped-front enclosure pivots 90 degrees from wall bracket, allowing complete access to rear of the sloped-front enclosure. The kit can be installed to pivot left or right and locks securely in position against a wall. Pivot pin is removable. Platform can support equipment weighing up to 300 lb. and includes holes to mount 600-mm wide sloped fronts in two positions. RAL 7035 textured light-gray polyester powder paint finish. Includes

Top-Unit-to-Frame Joining Kit (catalog number PJSTF6) to provide a watertight and dusttight seal to the sloped front.

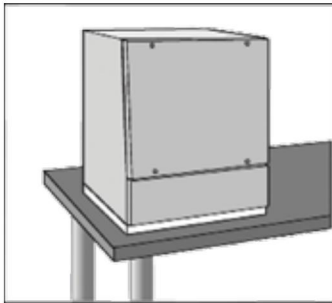
BULLETIN: P9



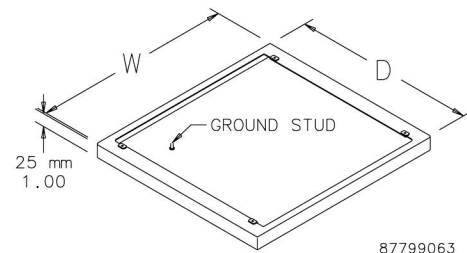
87799062

| Catalog Number | AxBxC in./mm | Description |
|----------------|--|-------------|
| PWMK66 | 23.90 x 23.62 x 26.88 607 x 600 x 683 | Steel |

BASES FOR SLOPED FRONT



Closes off open bottom of sloped-front enclosures that are table-top mounted or suspended from overhead. Base is 14 gauge steel and has a ground stud provided. Foam-in-place gasket assures a water-tight and dust-tight seal. Steel bases are finished with RAL 7035 textured light-gray polyester powder paint. A top support bracket can be installed inside a 600-mm wide base for reinforcement when a COMPACT Pendant Arm Series 4 System 50, 60 or 80 is attached from below.



87799063

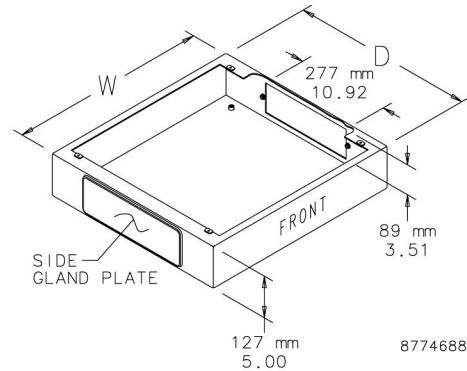
100-mm Base

| Catalog Number | Description | D mm/in. | W mm/in. |
|----------------|-----------------|--------------|--------------|
| PB166 | Steel | 559 22.01 | 599 23.58 |
| PB166SS | Stainless Steel | 559 22.01 | 599 23.58 |
| PB186 | Steel | 759 29.88 | 599 23.58 |

BULLETIN: P20, P20S, P9

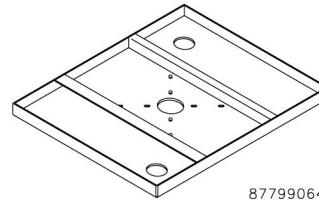
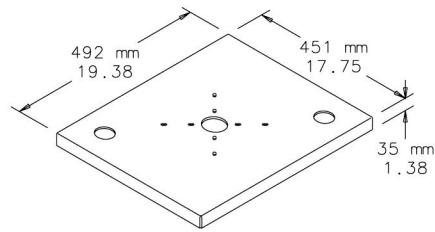
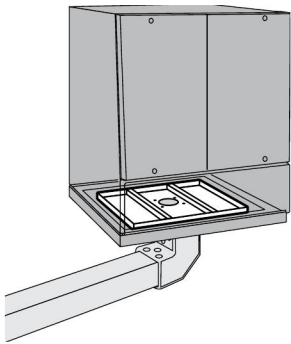
0-mm Base

| Catalog Number | Description | D mm/in. | W mm/in. |
|----------------|-------------|--------------|---------------|
| PBS66 | Steel | 542 21.34 | 608 23.94 |
| PBS86 | Steel | 542 21.34 | 808 31.81 |
| PBS126 | Steel | 542 21.34 | 1208 47.56 |



87746889

SUPPORT BRACKET



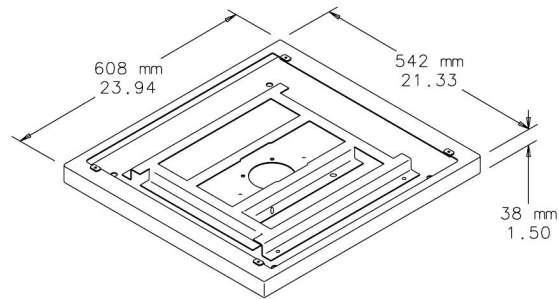
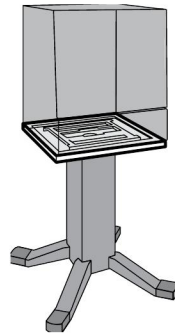
87799064

A Support Bracket is required when suspending a 600-mm wide sloped-front enclosure from above. The rigid bracket mounts inside the enclosure to stiffen its top. Bracket has prepunched holes to fit COMPACT Pendant Arm Series 4 Systems 50, 60 and 80 flange couplings as well as swivel tilts. Bracket is used as a template to drill holes in sloped front. Bracket is .125-inch-thick aluminum and is furnished with mounting bolts and seals. A support bracket can also be used inside a base for Series 4 System 50, 60 and 80 sloped fronts when mounting from below.

BULLETIN: P9

| Catalog Number | Description |
|----------------|-----------------|
| PTS66 | Support Bracket |

BASE WITH CUTOUT FOR SLOPED FRONT



87746890

Closes off open bottom of sloped-front enclosures. Also fits COMPACT Series 4 Pendant Arm Flange Coupling Systems 80 and 80/140. The 14 gauge steel base has a stiffener framework attached to the inside and mounting holes that provide a rigid mounting means for 8.00 x 8.00-in. pedestal, pedestal extension, swivel tilt or angle adapter. Base has foam-in-place gasket and RAL 7035 textured light-gray polyester powder paint finish. Mounting hardware is furnished.

BULLETIN: P9, P9S

| Catalog Number | Description |
|----------------|-----------------|
| PBSK66 | Steel |
| PBSK66SS | Stainless Steel |